



**Kellyville Ridge, NSW**  
 22 Clonmore Street

**4** **2** **2**  
 BED BATH CAR

**NORTH FACING MODERN HOME IN PRIME LOCATION !!**

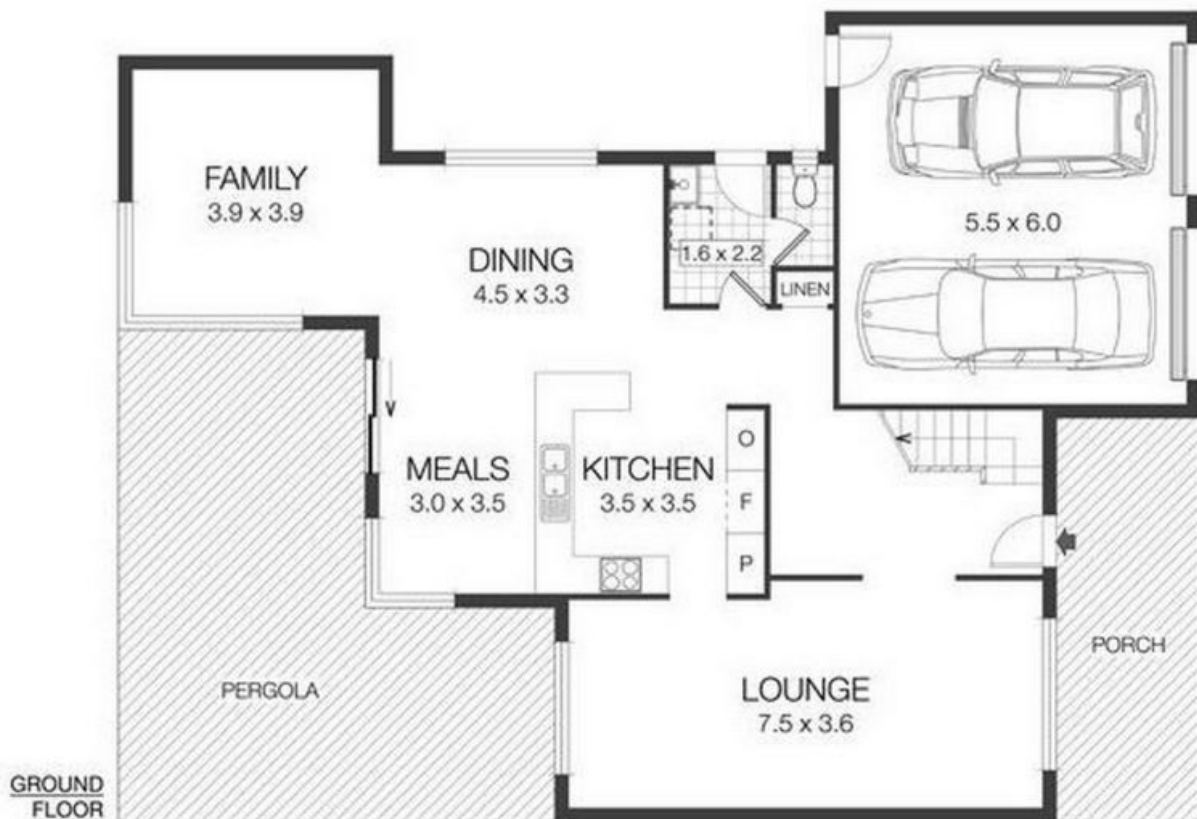
Tushar Virmani from Andrew Merton RE presents - This architectural triumph in a ultra-modern concept, presenting sophistication in every detail with innovative design and superb contemporary style. An excellent option for those that value privacy or love to entertain, family sized dimensions coupled with easy care attributes offers wide appeal. Beautifully appointed with excellent separation of spaces, its many attributes are further complemented by outstanding location. Constructed with a multitude of living areas inside and out, the home is equipped to accommodate to various services and activities to appeal to large and growing families. Located in a quiet street within a short distance from Rouse Hill Town Centre, bus T-ways, Tallawong and Rouse Hill train stations and local schools. This home is ideal for a family looking for space, comfort and convenience.

**DEPOSIT TAKEN BY TUSHAR**

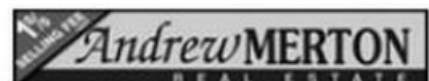
**Contact:** Andrew Merton Real Estate  
 02 9837 2999  
**Type:** House  
**Sold Date:** 28/04/2020  
**Land:** 515Square Metres  
<https://www.andrewmerton.com.au>

Features include:

North



22 CLONMORE STREET  
KELLYVILLE RIDGE 2155



**DISCLAIMER** - Whilst every attempt has been made to ensure the accuracy of the floor plan contained here the measurements of doors, windows and rooms are approximate and no responsibility is taken for any error, omission or mis-statement. These plans are for representation purposes only and should be used as such by any prospective purchaser.

Plans shown are only indicative of layout. Dimensions are approximate.

**Kellyville Ridge, NSW**  
22 Clonmore Street

**Andrew Merton Real  
Estate**