

Mount Druitt, NSW

6/161-163 Beames Avenue

3 BED **2** BATH **2** CAR

Luxury Villa near railway station: Call 0433112769

DEPOSIT TAKEN - SALE AGREED THANKS

This outstanding luxury villa is located near to Mount Druitt railway station. This villa was built in 2017 and includes a long list of quality elegant inclusions.

This property is currently tenanted for \$440 per week. The vendor has advised that the quarterly charges are Council \$377, Strata \$353, water bill including usage \$333.

This property includes three bedrooms all with builtin wardrobes, spacious open plan living/dining area, internal laundry, two bathrooms, double garage with internal access and rear yard with formed patio area. This property offers a luxury life style located in walking distance to all local amenities.

Special features include: stainless steel appliances, dishwasher, gas cook-top, vertical blinds, tiles and laminate flooring, mirror builtin wardrobes, ducted air conditioning.

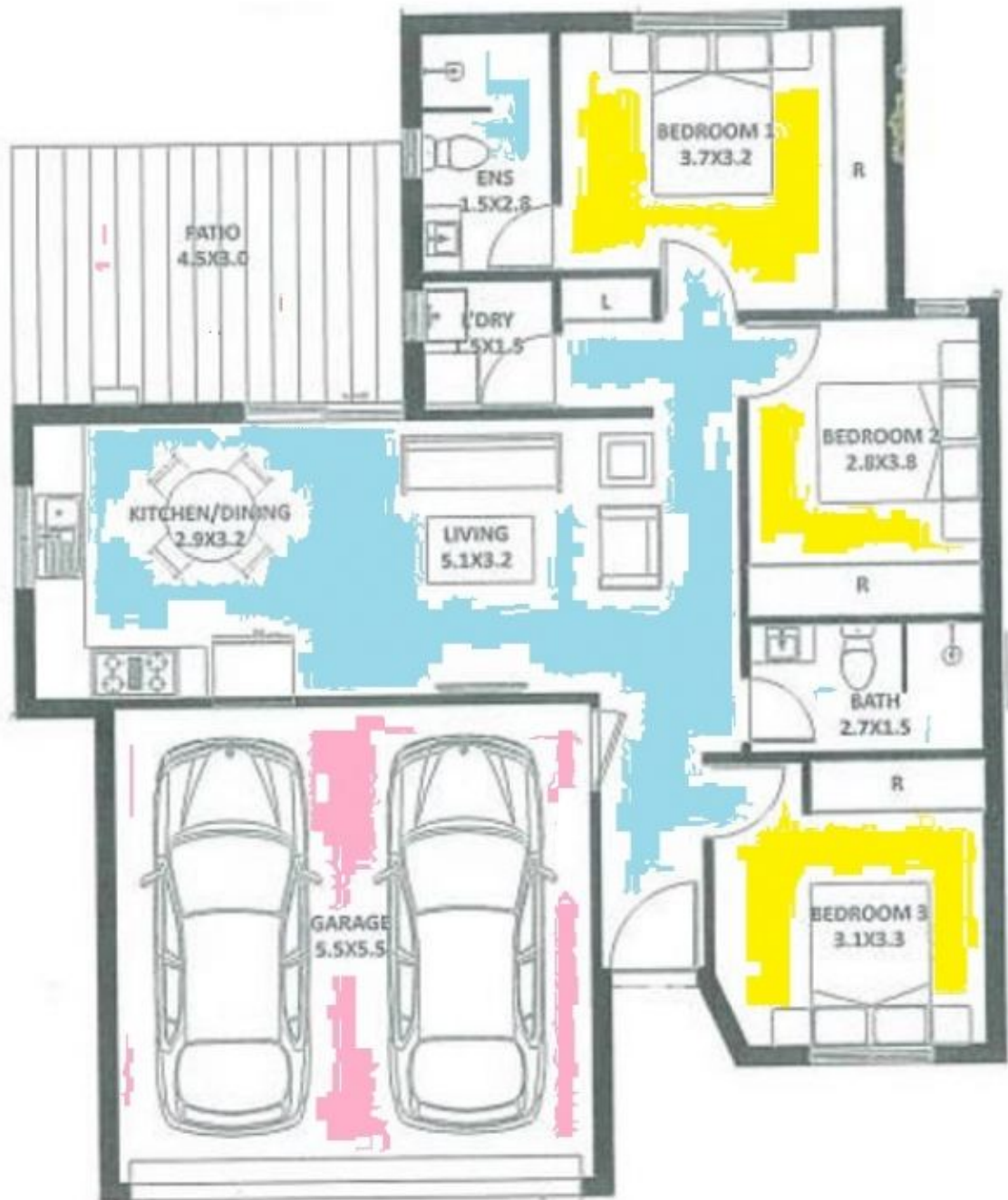
585000

Contact: Allan Green
0433112769

Type: Villa

Sold Date: 25/08/2020

<https://www.andrewmerton.com.au>



Floor Plan
Measurements are approximate and for illustration purposes only.

Plans shown are only indicative of layout. Dimensions are approximate.

Mount Druitt, NSW
6/161-163 Beames Avenue

Allan Green
0433112769