



**Plumpton, NSW**  
 55 Waring Crescent

**5** BED **3** BATH **2** CAR

**"Near New 5 BEDROOM Townhouse set in a Corner Position"**

A spacious Bright and Airy near New Townhouse house offering a unique flexible design allowing for Elderly Family members to use occupy a Ground Level bedroom with built- In and the convenience of a bathroom incorporated in a large laundry.

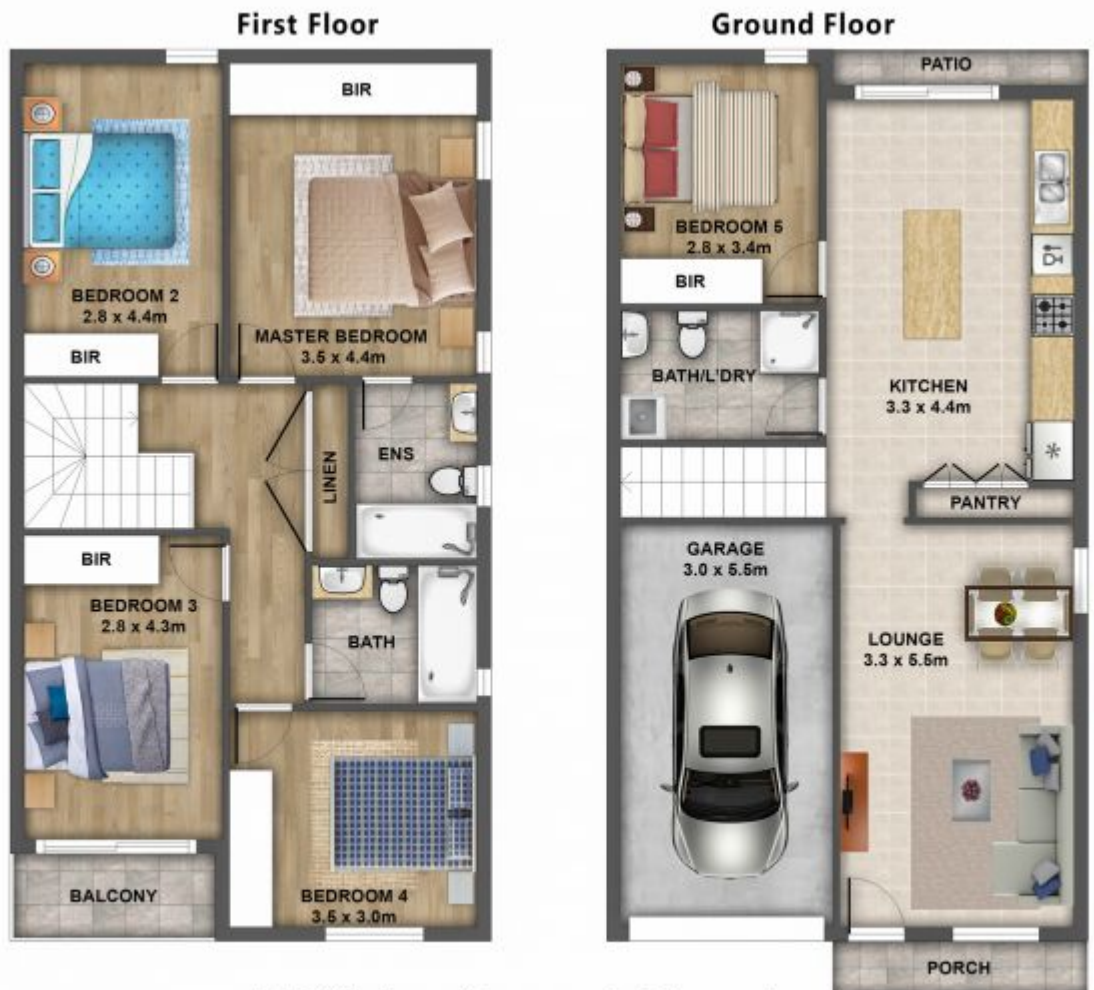
- \* 5 bedrooms all with mirrored built-ins robes
- \* 3 bathrooms, 1 at ground level and 2 on level 1
- \* Open plan dine-in kitchen with Island bar, stone bench tops, stainless steel appliances, dishwasher and the convenience of Gas cooking.
- \* Lock up Garage with Auto entrance and internal access PLUS an additional Car Space.
- \* Ducted Air Conditioning for year round Comfort Control.
- \* Security doors and window screens, Timber Flooring on Level 1 plus Alarm.
- \* Covered patio with direct access to a large Safe, Easy Care Corner block with a large Water Tank.

**\$690,000**

**Contact:** Andrew Merton  
 0433118560  
 Ajay Shetty  
 0406745598

**Type:** Townhouse  
**Sold Date:** 24/10/2020

<https://www.andrewmerton.com.au>



### 55 Waring Crescent, Plumpton

Disclaimer: Floor plans and site plans are intended as a guide only. They are not part of any legal document or title and are subject to inaccuracy and should not be used as legal reference. Sizes are approximate only.

Plans shown are only indicative of layout. Dimensions are approximate.

**Plumpton, NSW**  
55 Waring Crescent

**Andrew Merton**  
0433118560

**Ajay Shetty**  
0406745598