



Plumpton, NSW
 55 Waring Crescent

5 BED **3** BATH **2** CAR

"Near New 5 BEDROOM Townhouse set in a Corner Position"

A spacious Bright and Airy near New Townhouse house offering a unique flexible design allowing for Elderly Family members to use occupy a Ground Level bedroom with built- In and the convenience of a bathroom incorporated in a large laundry.

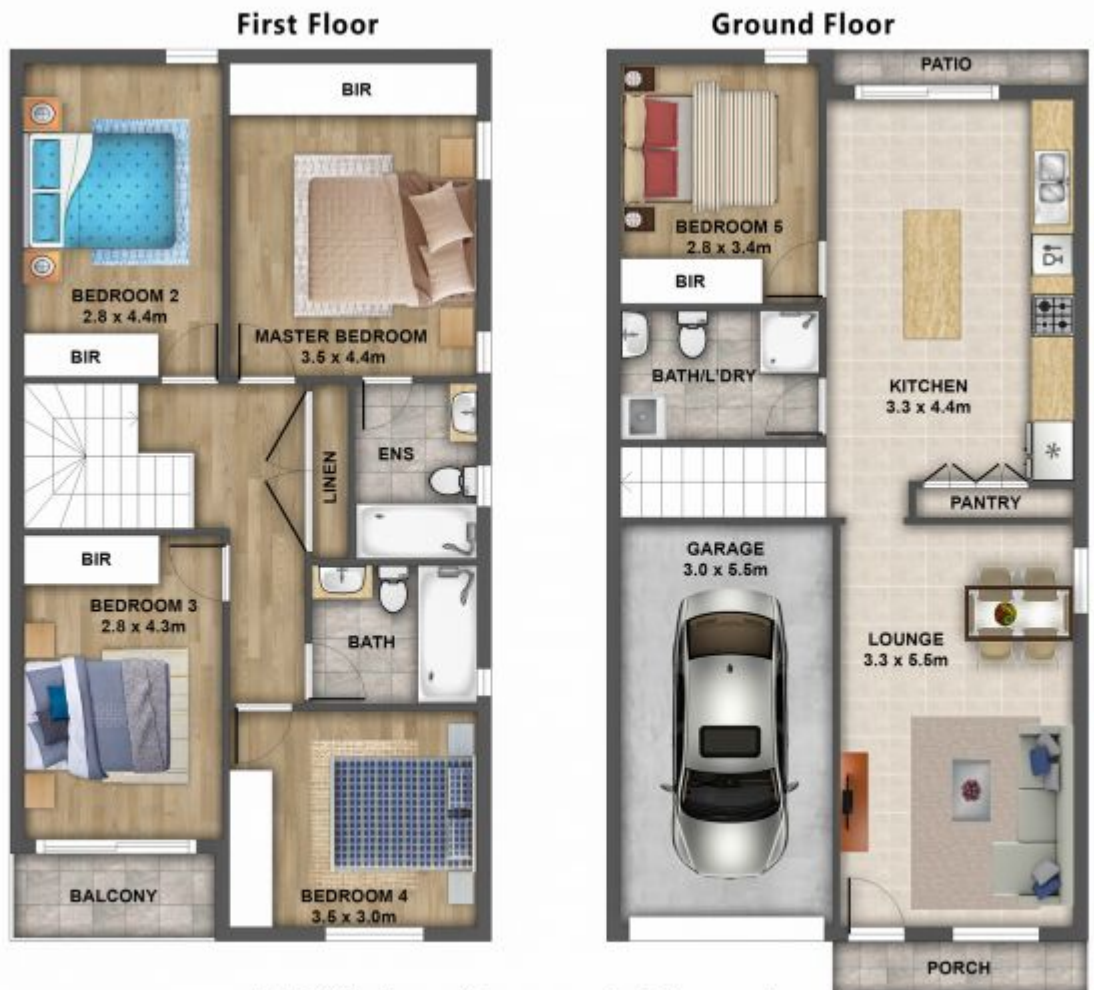
- * 5 bedrooms all with mirrored built-ins robes
- * 3 bathrooms, 1 at ground level and 2 on level 1
- * Open plan dine-in kitchen with Island bar, stone bench tops, stainless steel appliances, dishwasher and the convenience of Gas cooking.
- * Lock up Garage with Auto entrance and internal access PLUS an additional Car Space.
- * Ducted Air Conditioning for year round Comfort Control.
- * Security doors and window screens, Timber Flooring on Level 1 plus Alarm.
- * Covered patio with direct access to a large Safe, Easy Care Corner block with a large Water Tank.

\$690,000

Contact: Andrew Merton
 0433118560
 Ajay Shetty
 0439198959

Type: Townhouse
Sold Date: 24/10/2020

<https://www.andrewmerton.com.au>



55 Waring Crescent, Plumpton

Disclaimer: Floor plans and site plans are intended as a guide only. They are not part of any legal document or title and are subject to inaccuracy and should not be used as legal reference. Sizes are approximate only.

Plans shown are only indicative of layout. Dimensions are approximate.

Plumpton, NSW
55 Waring Crescent

Andrew Merton
0433118560

Ajay Shetty
0439198959