



5/161 Beames Avenue Mount Druitt NSW

3 **2** **2**

This outstanding luxury villa is located near to Mount Druitt railway station. This villa was built in 2017 and includes a long list of quality elegant inclusions.

The vendor has advised that the approximate quarterly charges are Council \$399, Strata \$349, water bill including usage \$294. Currently rented at \$500 per week.

This property includes three bedrooms all with builtin wardrobes, spacious open plan living/dining area, internal laundry, two bathrooms, double garage with internal access and rear yard with formed patio area. This property offers a luxury life style located in walking distance to all local amenities.

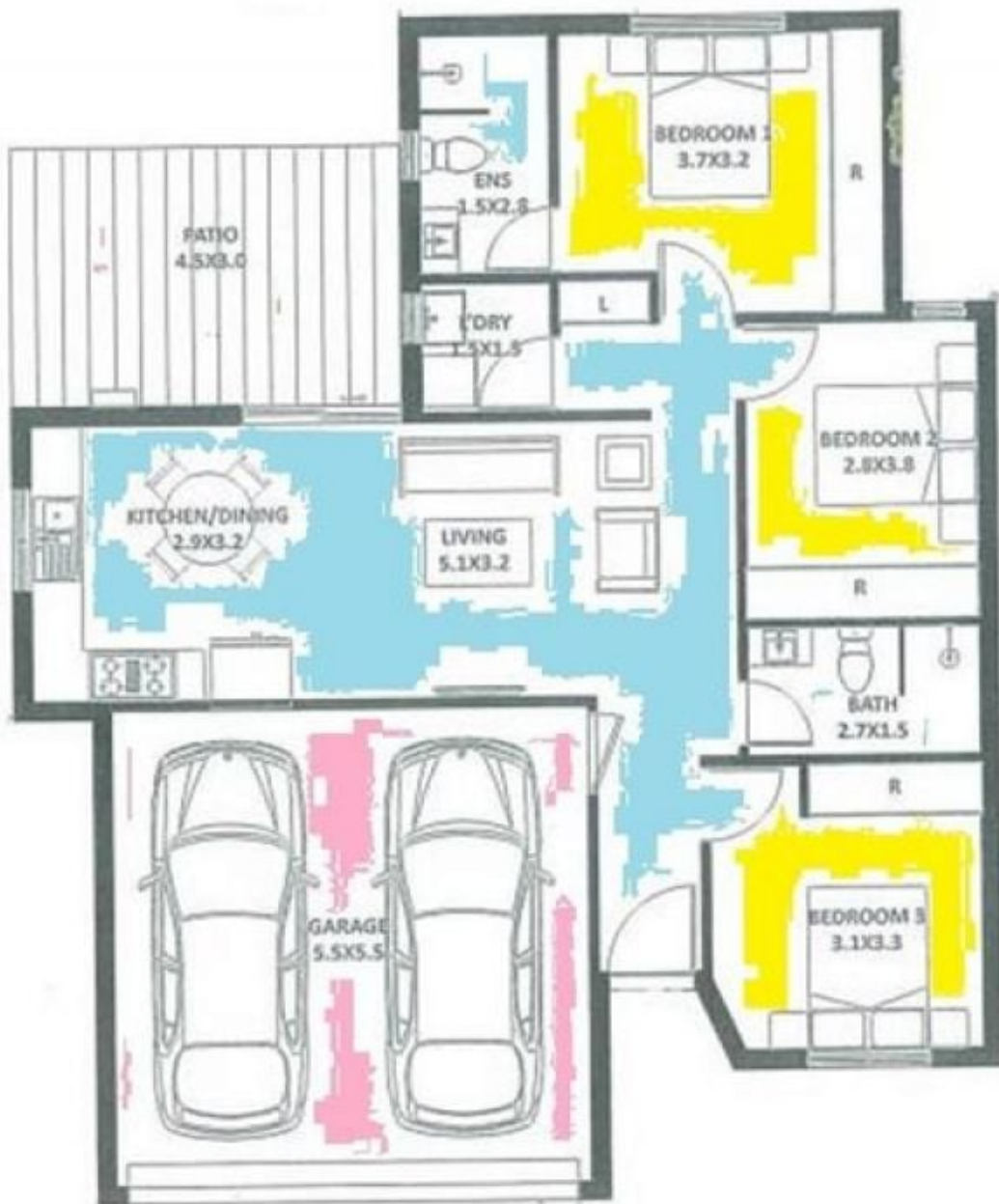
Special features include: stainless steel appliances,

[For full version visit the website](#)

Type : Villa
Price : \$ 660,000
View : <https://www.andrewmerton.com.au/5758140>



Allan Green
0433112769



Floor Plan
Measurements are approximate and for illustration purposes only.