

Mount Druitt, NSW

5/161 Beames Avenue

3

BED

2

BATH

2

CAR

Luxury villa near Mount Druitt railway station .

This outstanding luxury villa is located near to Mount Druitt railway station. This villa was built in 2017 and includes a long list of quality elegant inclusions.

The vendor has advised that the approximate quarterly charges are Council \$399, Strata \$349, water bill including usage \$294. Currently rented at \$500 per week.

This property includes three bedrooms all with built-in wardrobes, spacious open plan living/dining area, internal laundry, two bathrooms, double garage with internal access and rear yard with formed patio area. This property offers a luxury life style located in walking distance to all local amenities.

Special features include: stainless steel appliances, dishwasher, gas cook-top, vertical blinds, tiles and laminate flooring, mirror built-in wardrobes, ducted air conditioning.

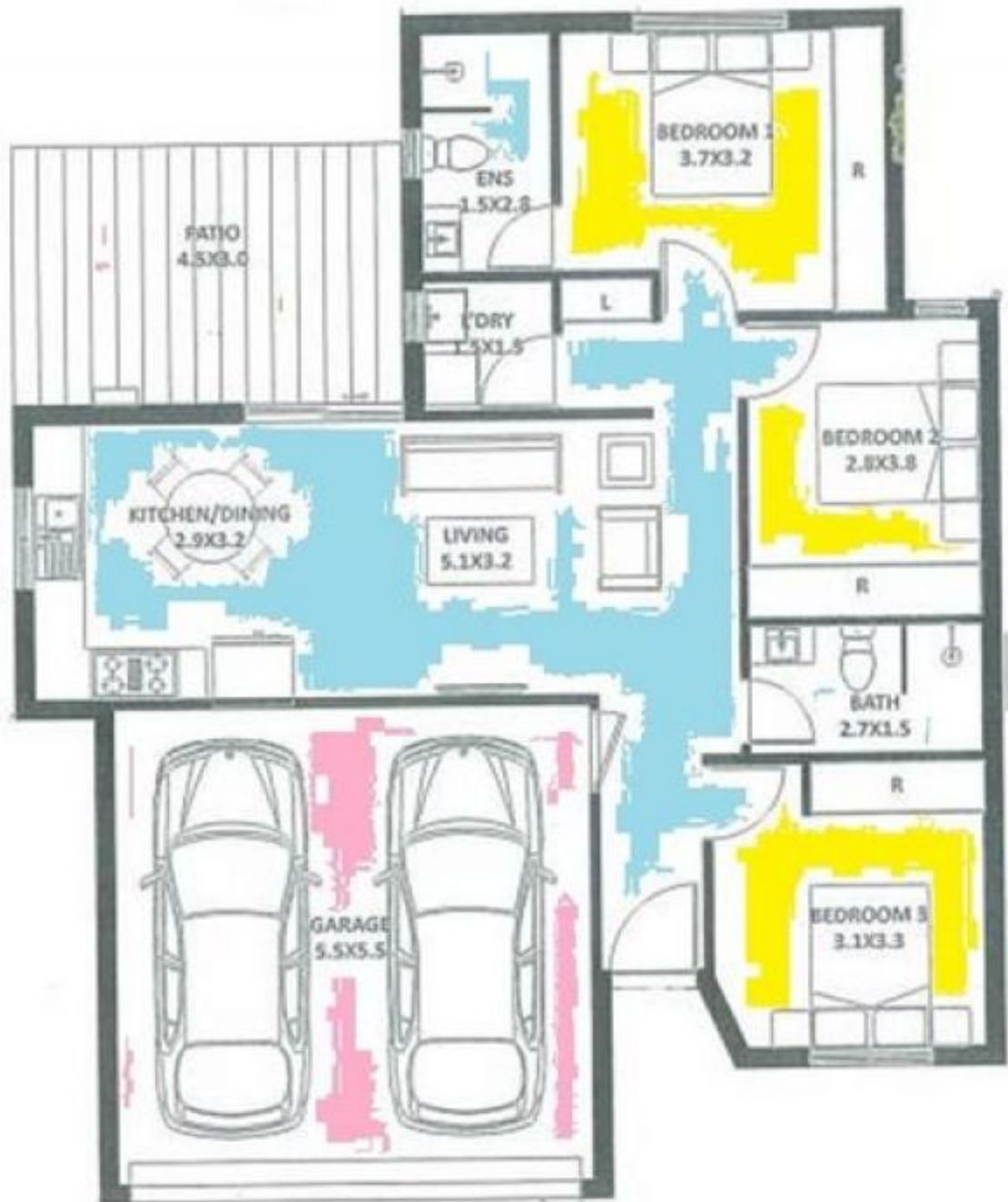
\$650000 to \$660000

Contact: Allan Green
0433112769
Allan Green
0433112769

Type: Villa

Sold Date: 18/11/2021

<https://www.andrewmerton.com.au>



Floor Plan
Measurements are approximate and for illustration purposes only.

Plans shown are only indicative of layout. Dimensions are approximate.

Mount Druitt, NSW
5/161 Beames Avenue

Allan Green
0433112769

Allan Green
0433112769