



Parramatta, NSW

Level 13/35/13-15 Hassall Street

2 **2** **1**
BED BATH CAR

PRESTIGE LIVING & CENTRAL LOCATION 110 sqm

This outstanding modern executive apartment is in a prime CBD location within walking distance of the Parramatta railway station, bus interchange, Westfield Shoppingtown, Western Sydney Uni, parks, excellent schools, good restaurants & cafes. It is located on level 13 of an impressive building complex. Note entrance is on Charles Street. Total area including living area & car space 110sqm.

The property includes:

- Combined lounge & dining area with air conditioning
- Modern kitchen with stone benchtops, gas cooking & dishwasher
- Fully tiled main bathroom
- Full size ensuite to main bedroom
- Built-in wardrobes to both bedrooms
- New laminate timber floorboards & freshly painted throughout
- Internal laundry
- Large balcony.
- Underground security large 21 sqm car space with swipe card entrance & lift access

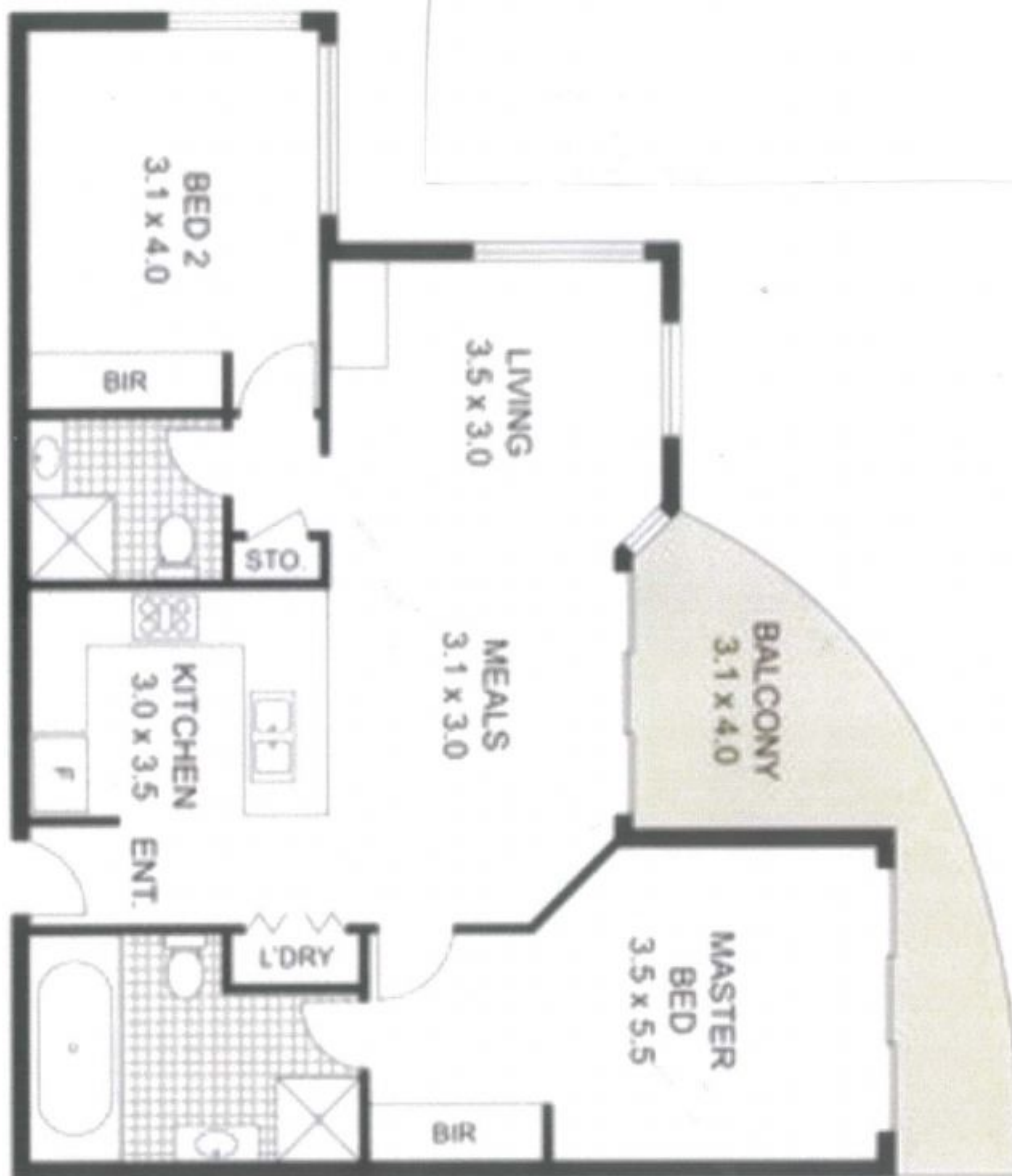
Expressions of interest

Contact: Allan Green
0433112769
Melvyn Mak
0433112758

Type: Apartment

Sold Date: 19/02/2023

<https://www.andrewmerton.com.au>



Plans shown are only indicative of layout. Dimensions are approximate.

Parramatta, NSW
Level 13/35/13-15 Hassall Street

Allan Green
0433112769

Melvyn Mak
0433112758