



Mount Druitt, NSW
9/48 Luxford Road

2 **1** **1**
BED BATH CAR

Extra large unit opposite Shopping centre

"Welcome to your perfect urban oasis! This incredible two-bedroom unit offers everything you need for comfortable and convenient living. With one bathroom, a large kitchen featuring gas cooking, and an amazing location near a large shopping centre and train station, this unit has it all.

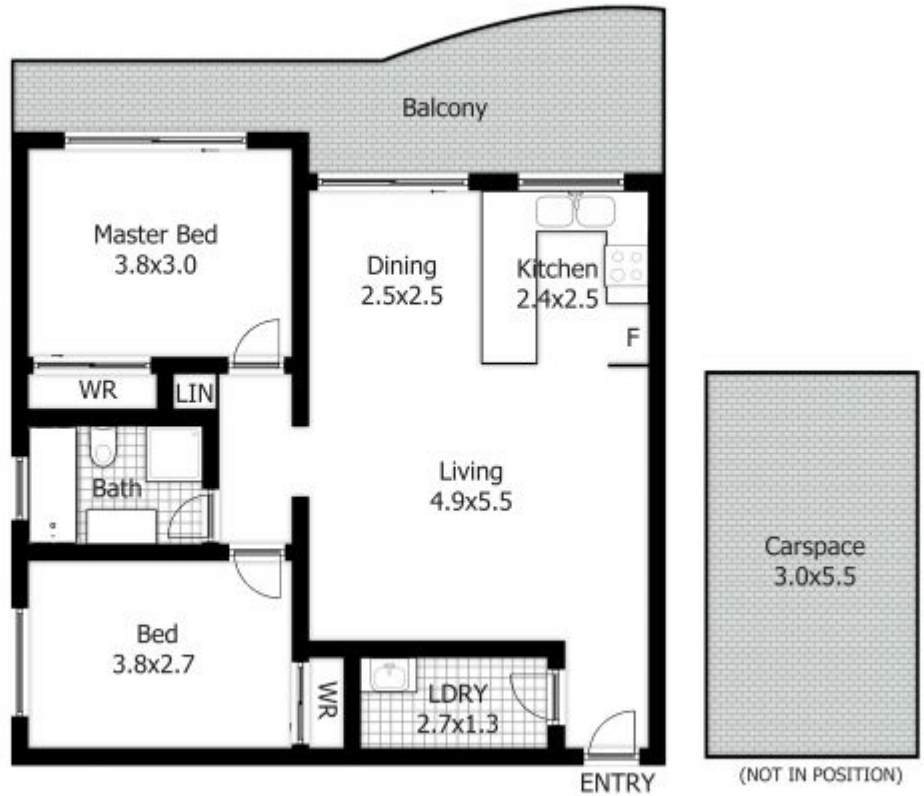
As you step inside, you'll be greeted by spacious living areas that are perfect for entertaining friends and family. The large kitchen is a chef's dream, with ample counter space and top-of-the-line gas cooking appliances. Prepare delicious meals while enjoying the convenience and efficiency of cooking with gas.

The location of this unit is truly unbeatable. Situated near a bustling shopping centre, you'll have easy access to a wide range of retail stores, dining options, and entertainment venues. Need to catch a train? No problem! The train station is just a stone's throw away, making your daily commute a breeze.

\$390,000

Contact: Andrew Merton
0433118560
Praveen Sethi
0432081190

Type: Apartment
<https://www.andrewmerton.com.au>



DISCLAIMER:

This floor plan is used for marketing purpose only and is subject to errors and inaccuracy. The marketing Agent & N2 Media will not accept any liability. Interested parties should make and rely on their own enquiries.

Plans shown are only indicative of layout. Dimensions are approximate.

Mount Druitt, NSW
9/48 Luxford Road

Andrew Merton
0433118560

Praveen Sethi
0432081190