

Plumpton, NSW
15 Gobi Glade

5 **3** **2**
BED BATH CAR

5 Bedrooms - Immaculate Home

"Welcome to your dream home! This stunning home boasts 5 spacious bedrooms and 3 luxurious bathrooms, including an en-suite for added convenience. The fancy large kitchen is a chef's delight, with ample space to whip up culinary masterpieces. You'll love the double garage with internal access, making parking a breeze.

The bedrooms in this home are generously sized, providing plenty of room for relaxation and personalization. Natural light floods through the windows, creating a warm and inviting atmosphere throughout. Step outside to the alfresco area, perfect for enjoying outdoor meals or simply soaking up the sunshine.

Convenience is key, as this townhouse is located close to shops and the railway station, making errands and commuting a breeze. Stay comfortable year-round with ducted air conditioning, ensuring the perfect temperature no matter the season. The bathrooms are super clean and modern, providing a spa-like experience for you and your family. And if you love cooking with gas, you'll be delighted to find a gas cooking range in the kitchen.

\$859,000

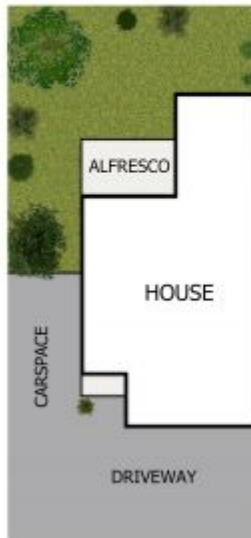
Contact: Peter Christou
0409463351
Andrew Merton
0433118560

Type: Townhouse
<https://www.andrewmerton.com.au>



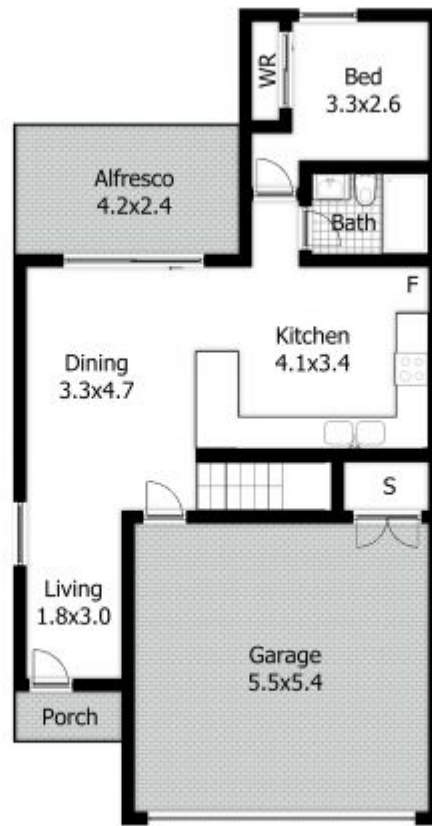
15 Gobi Glade, Plumpton

SITE PLAN



DISCLAIMER:

This floor plan is used for marketing purpose only and is subject to errors and inaccuracy. The marketing Agent & N2 Media will not accept any liability. Interested parties should make and rely on their own enquiries.



GROUND FLOOR

FLOOR PLAN



FIRST FLOOR

Plans shown are only indicative of layout. Dimensions are approximate.

Plumpton, NSW
15 Gobi Glade

Peter Christou
0409463351

Andrew Merton
0433118560